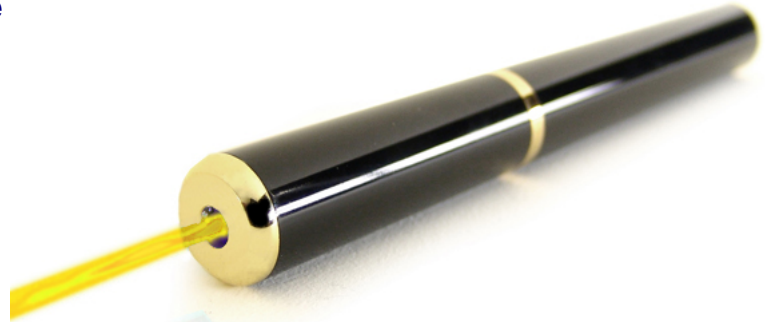




Rigel HV Portable Yellow Laser Module



Overview:

The new 589 nm bright yellow pointer from Laserglow is noticeably brighter and more "yellow" than the original 593.5 nm Rigel series yellow lasers. (The regular Rigel is often described as "amber-yellow".) This wavelength is closer to the middle of the spectrum, making it brighter to the human eye and more suitable for presentations on bright projection screens or long-range pointing applications. This is really the brightest and "yellowest" yellow pointer on the market!

Key Features:

- *Starting at: \$689*
- *Output Power: 2.0 mW - 4.9 mW, varies based upon model*
- *Expected Life: 3000-5000 hours*
- *Wavelength: 589 nm (yellow)*
- *Key Feature: The brightest yellow laser on the market!*
- *Casing: Solid Brass*
- *Package Includes: Portable laser, aluminum carrying case, instructions/warranty.*
- *Safety Info: Models below 5 mW comply with Class IIIa regulations.*
- *Duty Cycle: 30 sec. on/15 sec. off*

Specifications:

This spec sheet has been generated specifically for part number GRH-GAP, per your request, and data for the entire series is also displayed for your reference. The specs which are specific to GRH-GAP have been highlighted below in **red + bold**.

Laser Form Factor	GAP
Output Power (mW)	<2
FDA Safety Class	IIIa
Divergence (mrad, full angle)	<1.5
Beam Dimensions (mm, 1/e ²)	1.5
Longitudinal Modes	Multiple
Storage Temperature Range (°C)	-10 to 50
Total Power Consumption (W)	2
Max. Power Input Duty Cycle	30 sec. on/15 sec. off
Cooling Method	Passive Air
Standard Warranty (months)	6
MTTF (operational hours)	5000
Weight of Laser Head (kg)	0.1
Laser Head Dimensions (mm)	150 (l) x 16.5 (d)
Power Supply	1 x CR2 Battery

CW: All specifications are based on performance at full output power and after the specified warmup period. Output characteristics may change if the laser is run at a different power level.

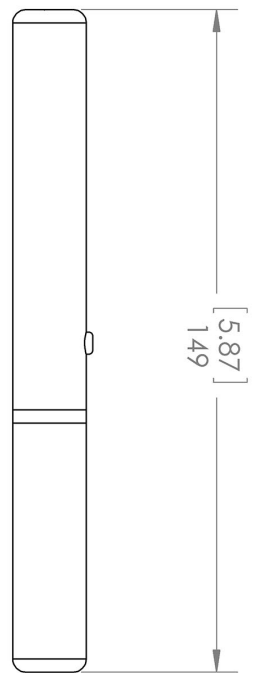
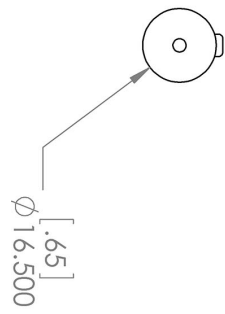
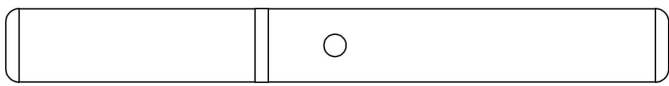
Q-Switched: Specifications are based on the laser pulsing at the specified design frequency. Output characteristics may change if the laser is run at a different frequency.

Regulatory Classification:

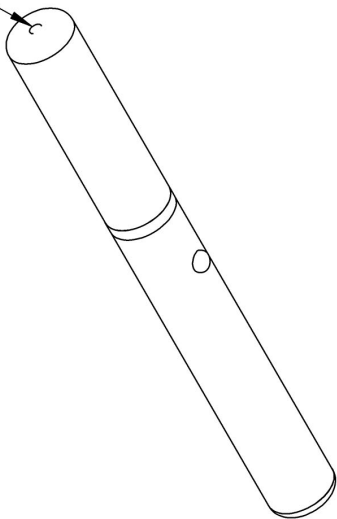
The model you have selected (GRH-GAP) requires the following safety label(s):



Dimensional Drawing - Laser Form Factor: GAP:



Aperture



UNLESS OTHERWISE SPECIFIED:
 DIMENSIONS ARE IN MM(INCH)
 TOLERANCES: +/- 0.75 MM

THE INFORMATION CONTAINED IN THIS
 DRAWING IS THE SOLE PROPERTY OF
 LASERGLLOW TECHNOLOGIES. ANY
 REPRODUCTION IN PART OR AS A WHOLE
 WITHOUT THE WRITTEN PERMISSION OF
 LASERGLLOW TECHNOLOGIES IS
 PROHIBITED. © 2012 LASERGLLOW.COM
 LIMITED. ALL RIGHTS RESERVED

Laserglow Technologies



TITLE:
**Aquarius /
 Rigel HV /
 Electra / Hydra**
 REV
1

SCALE: 2:3

SHEET 1 OF 1

Accessories:

The most popular accessories for model GRH-GAP are shown below. For additional details regarding these or other accessories please see our website or contact us directly.

Part Number	Description	
 AGF59459X	Optical Density 6 Fit over prescription glasses Protect your vision when working with Class IIIb and Class IV green lasers. Full Details: www.laserglow.com/AGF	
 ACAGAQ1XX	Carrying Case-7 Aquarius/Electra/Rigel HV/Hydra Full Details: www.laserglow.com/ACA	Included With Laser

FOR MORE INFORMATION PLEASE CONTACT:

LASERGLOW TECHNOLOGIES
873 St. Clair Ave West, Toronto, ON, Canada M6C1C4
Tel. (416) 729-7976 Fax (480) 247-4864
sales@laserglow.com www.laserglow.com

E&OE: Data included in this sheet may be subject to change without notice.

Please confirm critical specifications with our staff prior to ordering.