

## Libra Red Laser Pointer



### Series Specifications:

Nominal Wavelength	635 nm
Output Type	CW
Laser Source Type	Diode

### Overview:

The Libra is Laserglow's entry into the red laser pointer market. The flat black finish gives the Libra a tactical, utilitarian look and feel.

With a 635 nm wavelength the Libra is approximately 2 times brighter than most other red pointers - which normally use a 650 nm or 660 nm diode, making the Libra the brightest Class IIIa red laser pointer available.

As with all Laserglow products the Libra employs the highest level of quality and craftsmanship to make this simply the best Class IIIa red laser pointer on the market.

### Key Features:

- *Price:* **\$29**
- *Batteries:* 2 x "AAA" (Over 24 hours use with new batteries!)
- *Output Power:*
- *Wavelength:* 635 nm
- *Key Feature:* Flat black finish, no pocket clip
- *Casing:* Solid Brass
- *Package Includes:* Portable laser, batteries, carrying case, instructions/warranty.
- *Safety Info:* Complies with Class IIIa regulations.
- *Duty Cycle:* 100%

## Specifications:

This spec sheet has been generated specifically for part number GLI-GLI, per your request, and data for the entire series is also displayed for your reference. The specs which are specific to GLI-GLI have been highlighted below in **red + bold**.

Laser Form Factor	<b>GLI</b>
Output Power (mW)	<b>&lt;5</b>
FDA Safety Class	<b>IIIa</b>
Central Wavelength (nm)	<b>635</b>
Divergence (mrad, full angle)	<b>&lt;1.5</b>
Beam Dimensions (mm, 1/e <sup>2</sup> )	<b>1.5x3.5</b>
Transverse Mode	<b>Near TEM00</b>
Longitudinal Modes	<b>Multiple</b>
Storage Temperature Range (°C)	<b>-10 to 50</b>
Total Power Consumption (W)	<b>1</b>
Max. Power Input Duty Cycle	<b>100%</b>
Cooling Method	<b>Passive Air</b>
Standard Warranty (months)	<b>6</b>
MTTF (operational hours)	<b>5000</b>
Weight of Product or Laser Head (kg)	<b>0.04</b>
Dimensions of Product or Laser Head (mm)	<b>124 (l) x 13 (d)</b>
Power Supply	<b>2 x AAA Batteries</b>

CW: All specifications are based on performance at full output power and after the specified warmup period. Output characteristics may change if the laser is run at a different power level.

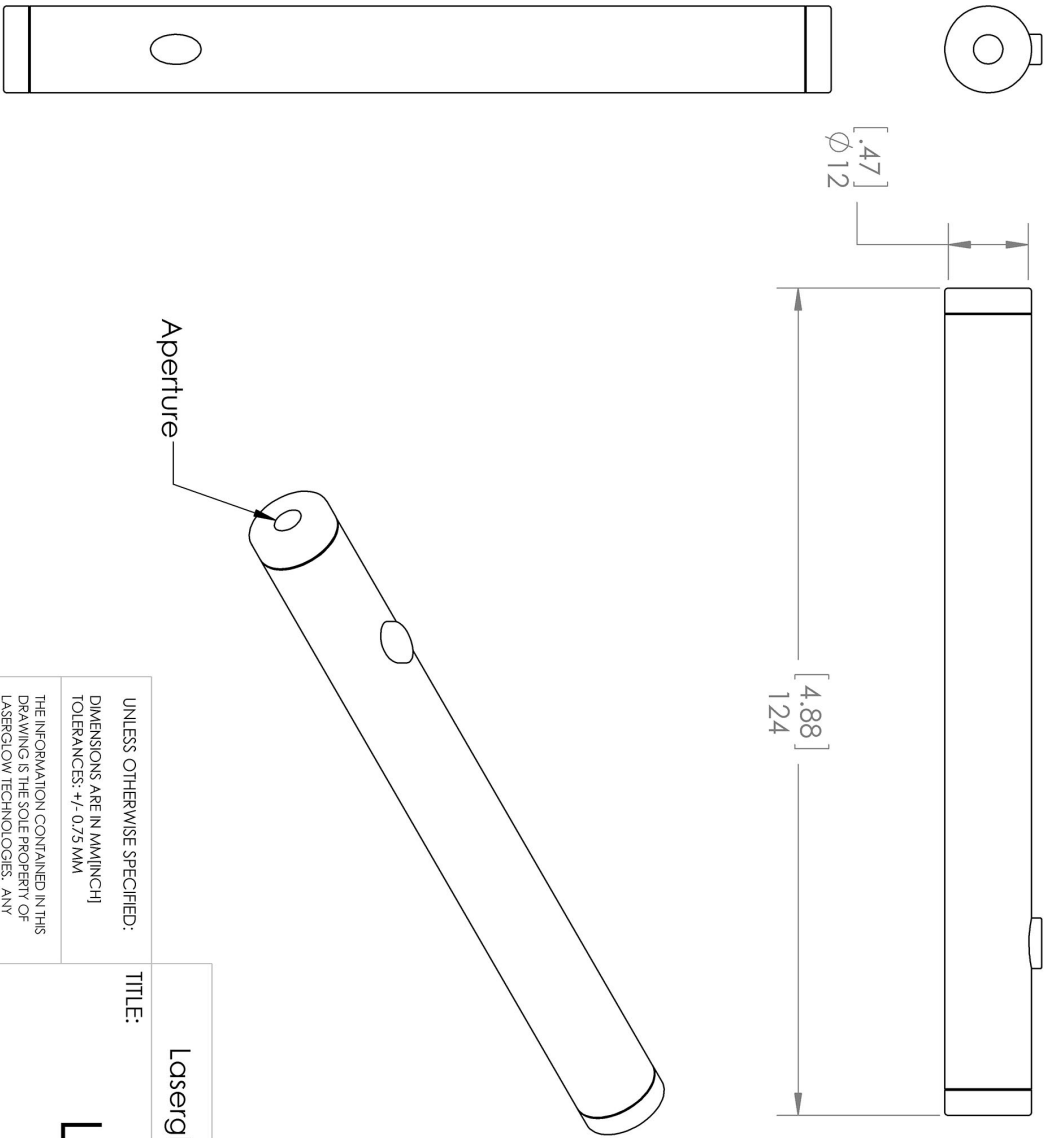
Q-Switched: Specifications are based on the laser pulsing at the specified design frequency. Output characteristics may change if the laser is run at a different frequency.

## Regulatory Classification:

The model you have selected (GLI-GLI) requires the following safety label(s):




**Dimensional Drawing - Laser Form Factor: GLI:**



<p>UNLESS OTHERWISE SPECIFIED:          DIMENSIONS ARE IN MM(INCH)          TOLERANCES: +/- 0.75 MM</p>	
<p>TITLE:  <b>Laserglow Technologies</b></p>	
<p>THE INFORMATION CONTAINED IN THIS DRAWING IS THE SOLE PROPERTY OF LASERGLOW TECHNOLOGIES. ANY REPRODUCTION IN PART OR AS A WHOLE WITHOUT THE WRITTEN PERMISSION OF LASERGLOW TECHNOLOGIES IS PROHIBITED. © 2012 LASERGLOW.COM LIMITED. ALL RIGHTS RESERVED</p>	
<p>SCALE: 1:1</p>	<p>REV  <b>1</b></p>
<p>SHEET 1 OF 1</p>	

**Accessories:**

The most popular accessories for model GLI-GLI are shown below. For additional details regarding these or other accessories please see our website or contact us directly.

Part Number	Description	
 ASE001XXX	Engraving On Laser Pointer Max. 2 lines 45 characters each Full Details: <a href="http://www.laserglow.com/ASE">www.laserglow.com/ASE</a>	

**FOR MORE INFORMATION PLEASE CONTACT:**

LASERGLOW TECHNOLOGIES  
873 St. Clair Ave West, Toronto, ON, Canada M6C1C4  
Tel. (416) 729-7976 Fax (480) 247-4864  
[sales@laserglow.com](mailto:sales@laserglow.com) [www.laserglow.com](http://www.laserglow.com)

E&OE: Data included in this sheet may be subject to change without notice.

Please confirm critical specifications with our staff prior to ordering.