

## Altair Focus-Adjustable Green Laser Pointer



### Series Specifications:

Nominal Wavelength	532 nm
Output Type	CW
Laser Source Type	DPSS

### Overview:

An Altair laser is the perfect tool for professionals and laser hobbyists who need full control over the size of the projected beam. The projected spot size can be easily adjusted using the focusing ring at the front of the laser pointer.

The combination of this added functionality with improved green laser pointer technology makes the Altair the perfect choice for dozens of applications from being used at personnel check-points to demonstrating the properties of light in educational applications.

The Altair is also ideal for presentations on a variety of viewing screens.

All of Laserglow's green laser pointers are IR-filtered for safety and employ APC technology to maintain constant output power. APC (Automatic Power Control) is a system that uses an optical feedback loop to ensure stable laser output.

### Key Features:

- *Starting at: \$59*
- *Output Power: 3.0 mW - 5.0 mW*
- *Wavelength: 532 nm (green)*
- *Key Feature: Adjustable Focus*
- *Casing: Solid Brass, black with Chrome with pocket clip*
- *Safety Info: Complies with Class IIIa regulations.*
- *Package Includes: Portable laser, batteries, carrying case, instructions/warranty.*
- *Duty Cycle: 90 sec. on/20 sec. off*

Quality, safety, unique features and range make Laserglow the leader in green pointers. [Learn more here.](#)

## Specifications:

This spec sheet has been generated specifically for part number GAL-GAL, per your request, and data for the entire series is also displayed for your reference. The specs which are specific to GAL-GAL have been highlighted below in **red + bold**.

Laser Form Factor	<b>GAL</b>
Output Power (mW)	<b>&gt;3, &lt;5</b>
FDA Safety Class	<b>IIIa</b>
Central Wavelength (nm)	<b>531.65</b>
Divergence (mrad, full angle)	<b>&lt;1.2</b>
Beam Dimensions (mm, 1/e <sup>2</sup> )	<b>1.5</b>
Transverse Mode	<b>TEM00</b>
Longitudinal Modes	<b>Multiple</b>
Operating Temperature Range (°C)	<b>15 to 35</b>
Storage Temperature Range (°C)	<b>-10 to 50</b>
Total Power Consumption (W)	<b>2</b>
Max. Power Input Duty Cycle	<b>90 sec. on/20 sec. off</b>
Cooling Method	<b>Passive Air</b>
Standard Warranty (months)	<b>6</b>
MTTF (operational hours)	<b>5000</b>
Weight of Product or Laser Head (kg)	<b>0.06</b>
Dimensions of Product or Laser Head (mm)	<b>155 (l) x 13.5 (d)</b>
Power Supply	<b>2 x AAA Batteries</b>

CW: All specifications are based on performance at full output power and after the specified warmup period. Output characteristics may change if the laser is run at a different power level.

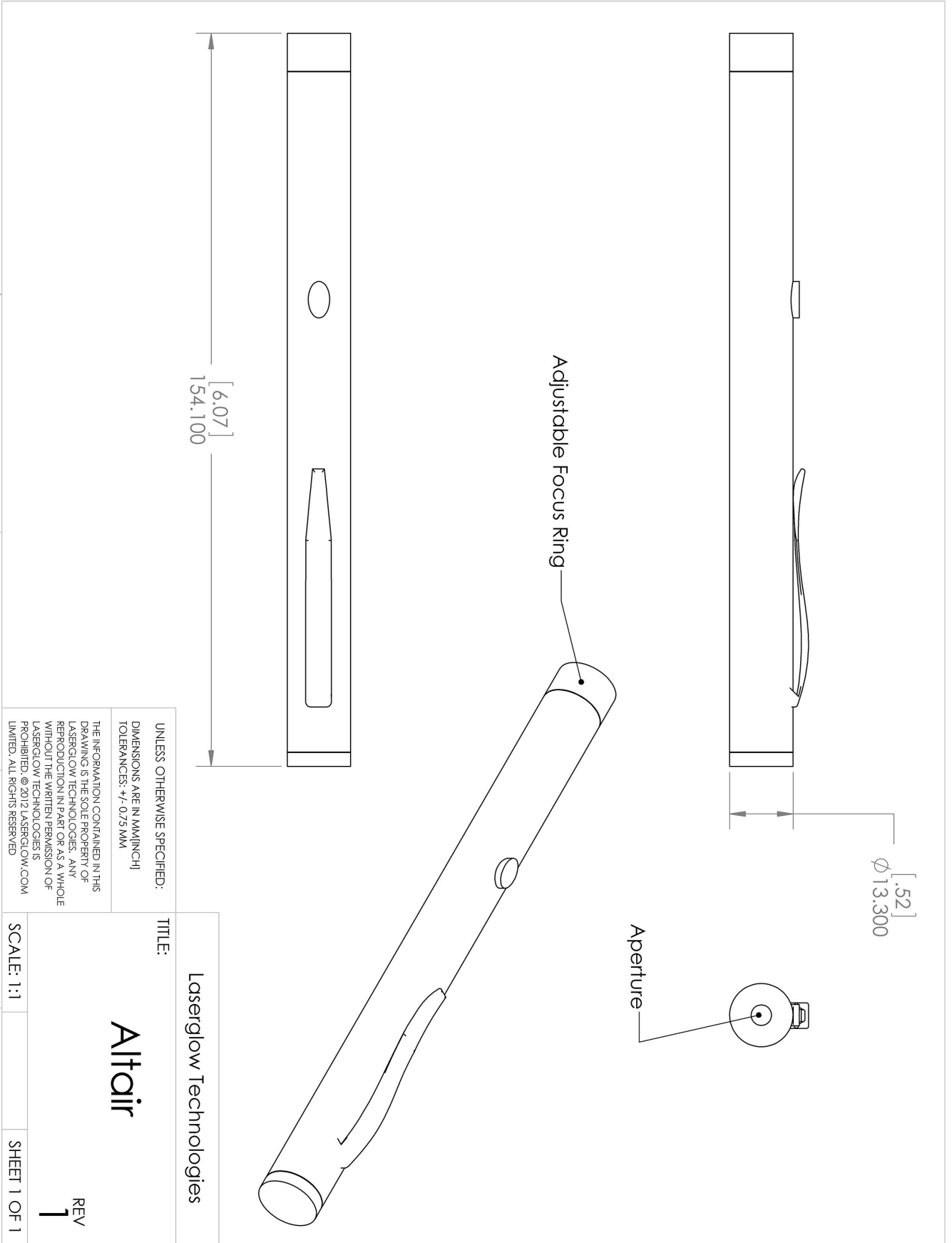
Q-Switched: Specifications are based on the laser pulsing at the specified design frequency. Output characteristics may change if the laser is run at a different frequency.

## Regulatory Classification:

The model you have selected (GAL-GAL) requires the following safety label(s):



**Dimensional Drawing - Laser Form Factor: GAL:**



UNLESS OTHERWISE SPECIFIED:  
 DIMENSIONS ARE IN MILLIMETER  
 TOLERANCES: +/- 0.075 MM


TITLE:		Laserglow Technologies	
SCALE:		1:1	
REV		1	
SHEET		1 OF 1	

**Altair**

THE INFORMATION CONTAINED IN THIS DRAWING IS THE SOLE PROPERTY OF LASERGLLOW TECHNOLOGIES. ANY REPRODUCTION IN PART OR AS A WHOLE WITHOUT THE WRITTEN PERMISSION OF LASERGLLOW TECHNOLOGIES IS PROHIBITED. © 2012 LASERGLLOW.COM LIMITED. ALL RIGHTS RESERVED

**Accessories:**

The most popular accessories for model GAL-GAL are shown below. For additional details regarding these or other accessories please see our website or contact us directly.

Part Number	Description	
 ASE001XXX	Engraving On Laser Pointer Max. 2 lines 45 characters each Full Details: <a href="http://www.laserglow.com/ASE">www.laserglow.com/ASE</a>	

**FOR MORE INFORMATION PLEASE CONTACT:**

LASERGLOW TECHNOLOGIES  
873 St. Clair Ave West, Toronto, ON, Canada M6C1C4  
Tel. (416) 729-7976 Fax (480) 247-4864  
[sales@laserglow.com](mailto:sales@laserglow.com) [www.laserglow.com](http://www.laserglow.com)

E&OE: Data included in this sheet may be subject to change without notice.

Please confirm critical specifications with our staff prior to ordering.